

# Sky Meadows State Park



www.virginiastateparks.gov  
1-800-933-7275



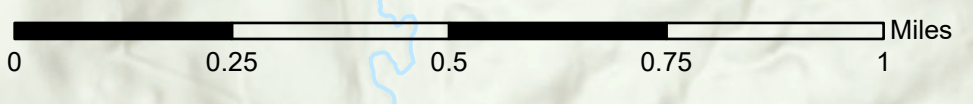
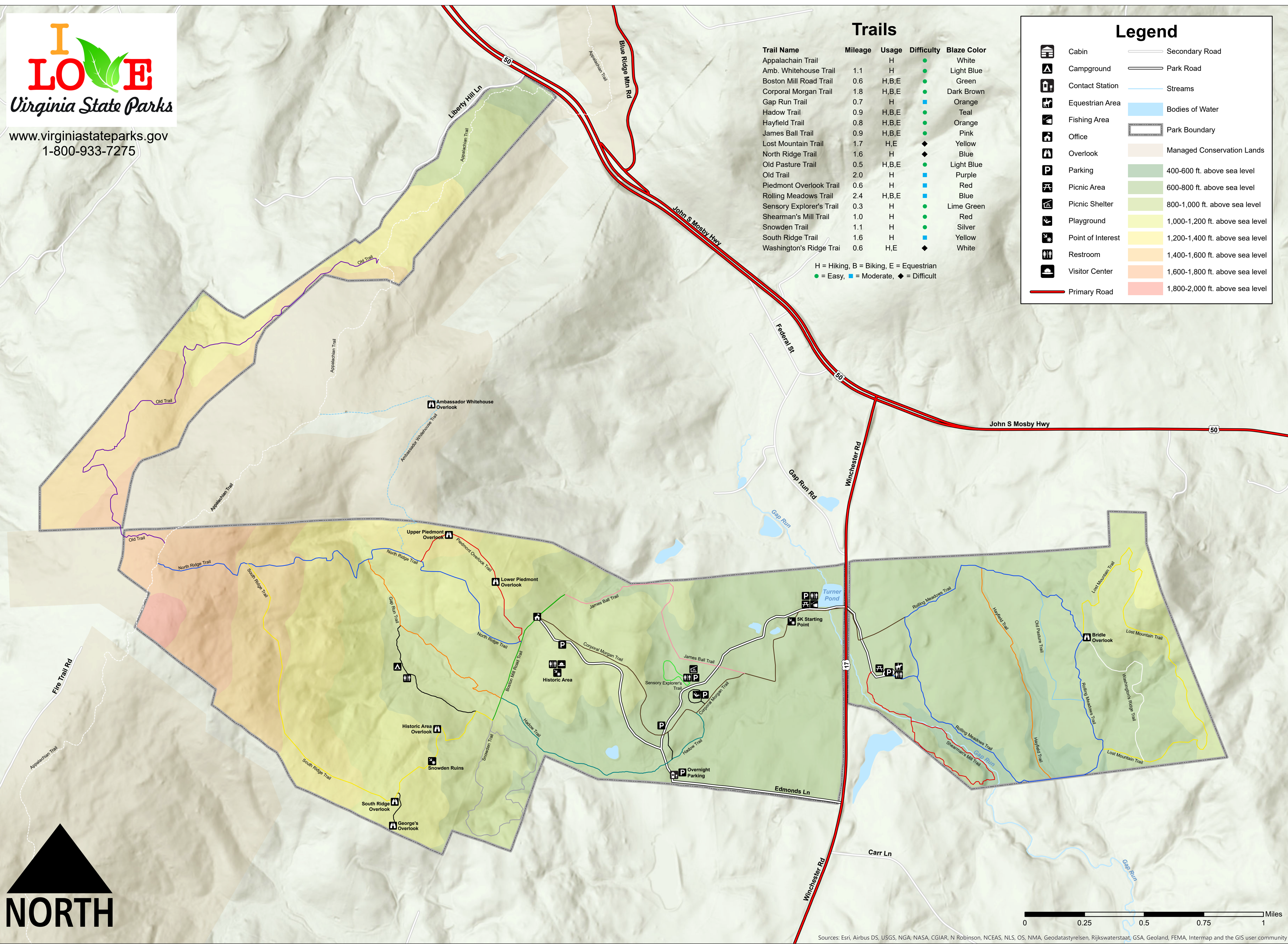
### Trails

Trail Name	Mileage	Usage	Difficulty	Blaze Color
Appalachian Trail		H	●	White
Amb. Whitehouse Trail	1.1	H	●	Light Blue
Boston Mill Road Trail	0.6	H,B,E	●	Green
Corporal Morgan Trail	1.8	H,B,E	●	Dark Brown
Gap Run Trail	0.7	H	■	Orange
Hadow Trail	0.9	H,B,E	■	Teal
Hayfield Trail	0.8	H,B,E	●	Orange
James Ball Trail	0.9	H,B,E	●	Pink
Lost Mountain Trail	1.7	H,E	◆	Yellow
North Ridge Trail	1.6	H	◆	Blue
Old Pasture Trail	0.5	H,B,E	●	Light Blue
Old Trail	2.0	H	■	Purple
Piedmont Overlook Trail	0.6	H	■	Red
Rolling Meadows Trail	2.4	H,B,E	■	Blue
Sensory Explorer's Trail	0.3	H	●	Lime Green
Shearman's Mill Trail	1.0	H	●	Red
Snowden Trail	1.1	H	●	Silver
South Ridge Trail	1.6	H	■	Yellow
Washington's Ridge Trail	0.6	H,E	◆	White

H = Hiking, B = Biking, E = Equestrian  
● = Easy, ■ = Moderate, ◆ = Difficult

### Legend

	Cabin		Secondary Road
	Campground		Park Road
	Contact Station		Streams
	Equestrian Area		Bodies of Water
	Fishing Area		Park Boundary
	Office		Managed Conservation Lands
	Overlook		400-600 ft. above sea level
	Parking		600-800 ft. above sea level
	Picnic Area		800-1,000 ft. above sea level
	Picnic Shelter		1,000-1,200 ft. above sea level
	Playground		1,200-1,400 ft. above sea level
	Point of Interest		1,400-1,600 ft. above sea level
	Restroom		1,600-1,800 ft. above sea level
	Visitor Center		1,800-2,000 ft. above sea level
	Primary Road		



Sources: Esri, Airbus DS, USGS, NGA, NASA, CGIAR, N Robinson, NCEAS, NLS, OS, NMA, Geodastyrrelsen, Rijkswaterstaat, GSA, Geoland, FEMA, Intermap and the GIS user community