



Legend

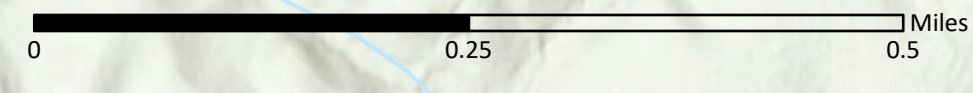
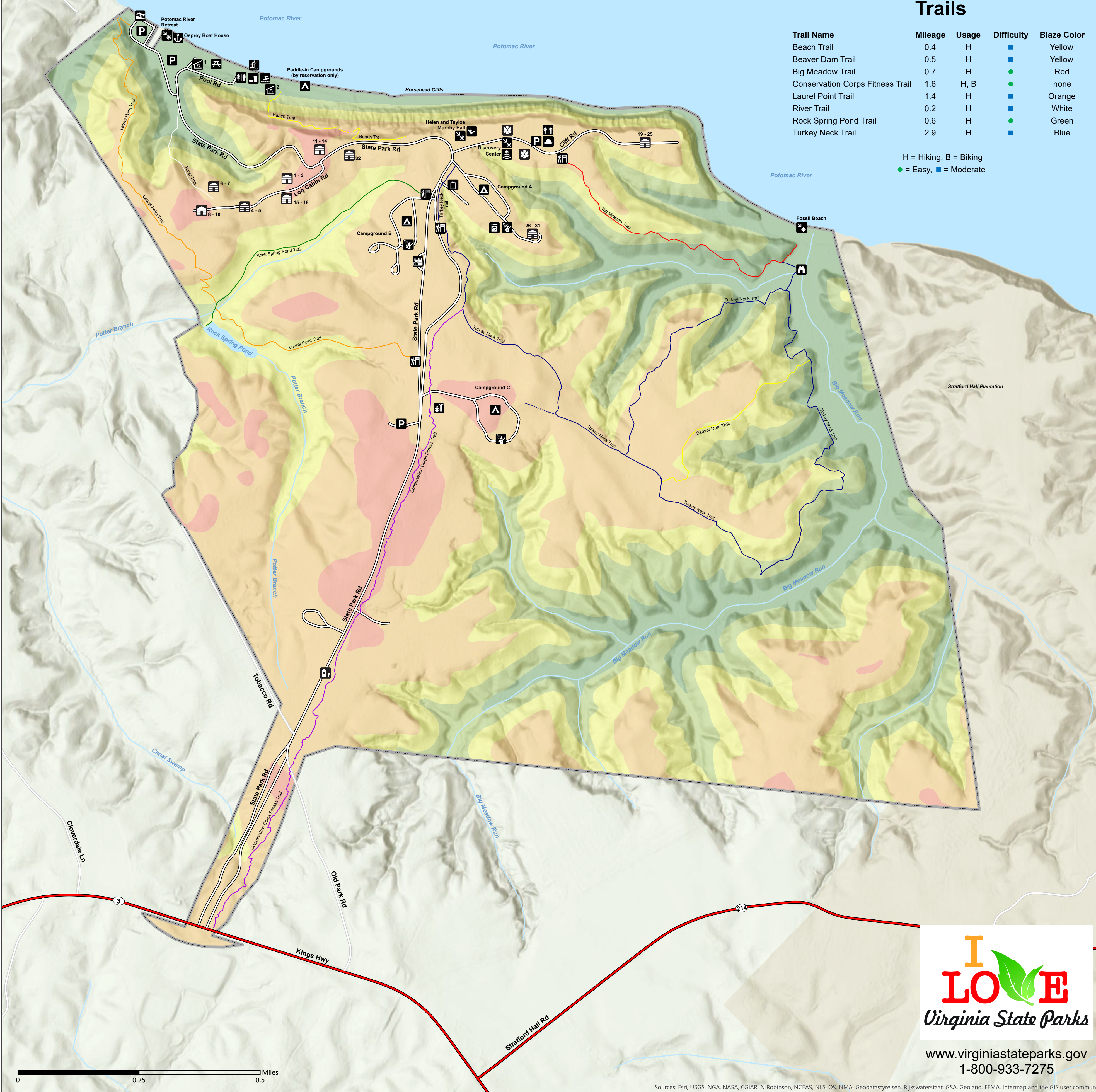
Amphitheater	Concessions	Overlook	Pollinator Garden	Primary Road	Stratford Hall Plantation
Bathhouse	Contact Station	Parking	Pool	Secondary Road	0 - 40 ft above sea level
Boat Ramp	Exercise Trail	Picnic Area	Restrooms	Park Road	40 - 80 ft above sea level
Cabins	Fishing Pier	Picnic Shelter	Sanitary Disposal Station	Streams	80 - 120 ft above sea level
Camp Store	Laundromat	Playground	Trailhead	Bodies of Water	120 - 160 ft above sea level
Campground	Osprey Boat House	Point of Interest	Visitor Center	Park Boundary	160 - 200 ft above sea level

Trails

Trail Name	Mileage	Usage	Difficulty	Blaze Color
Beach Trail	0.4	H	■	Yellow
Beaver Dam Trail	0.5	H	■	Yellow
Big Meadow Trail	0.7	H	●	Red
Conservation Corps Fitness Trail	1.6	H, B	●	none
Laurel Point Trail	1.4	H	■	Orange
River Trail	0.2	H	■	White
Rock Spring Pond Trail	0.6	H	●	Green
Turkey Neck Trail	2.9	H	■	Blue

H = Hiking, B = Biking
 ● = Easy, ■ = Moderate

Westmoreland State Park



www.virginiastateparks.gov
 1-800-933-7275

Sources: Esri, USGS, NGA, NASA, CGIAR, N Robinson, NCEAS, NLS, OS, NMA, Geodatastyrelsen, Rijkswaterstaat, GSA, Geoland, FEMA, Intermap and the GIS user community