



Gloucester County, Virginia
November 2018

TIMBERNECK FARM DESIGN DEVELOPMENT

EXISTING CONDITIONS





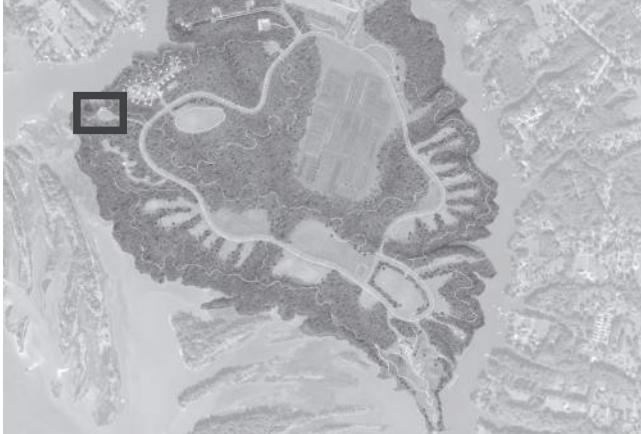
PHASE 1



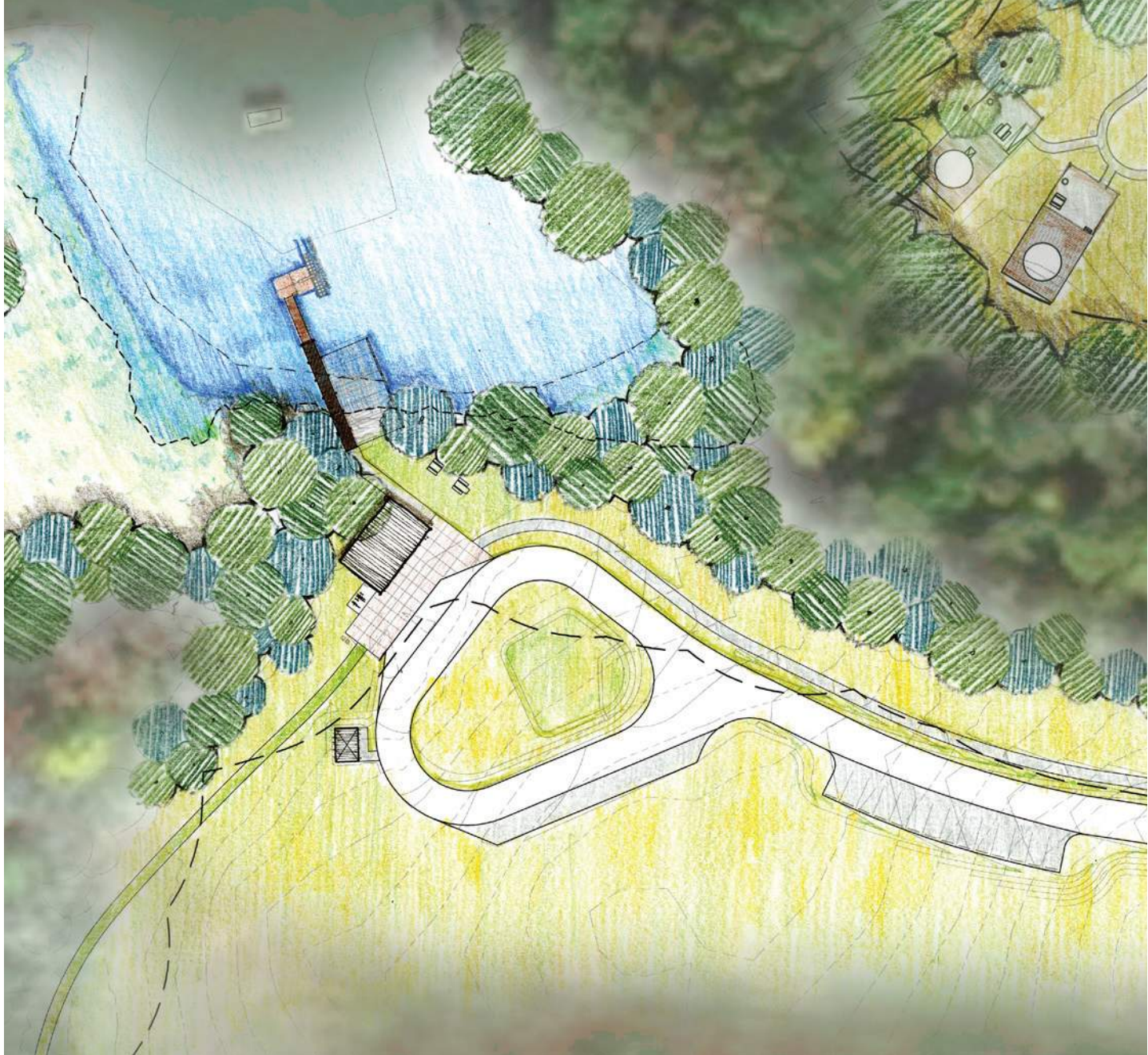


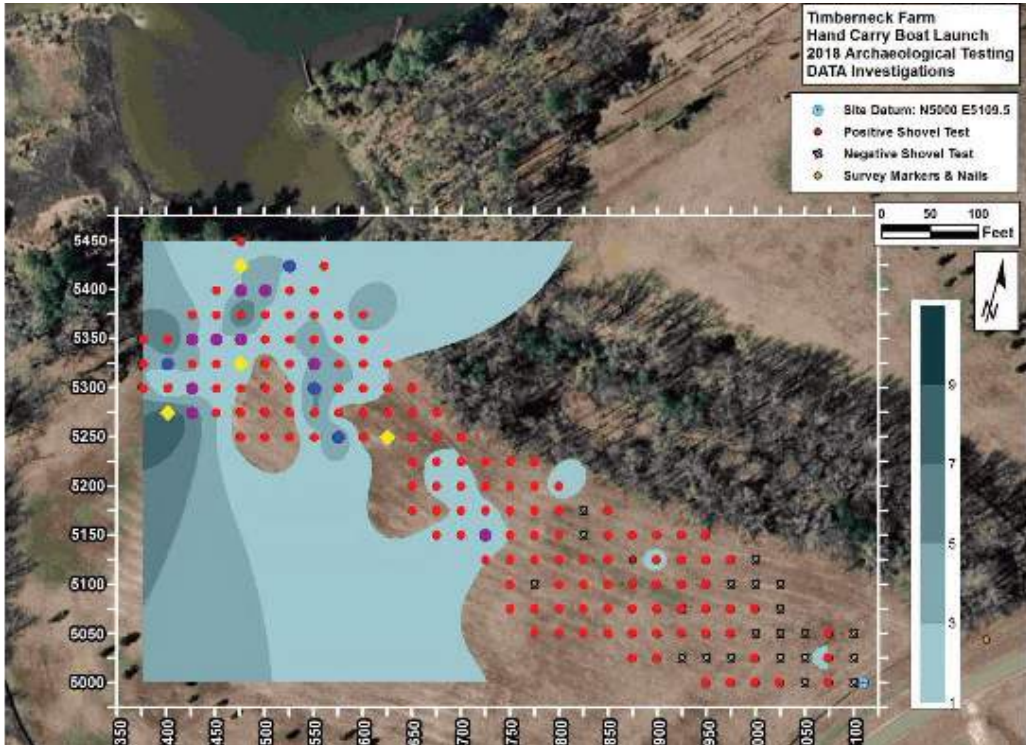
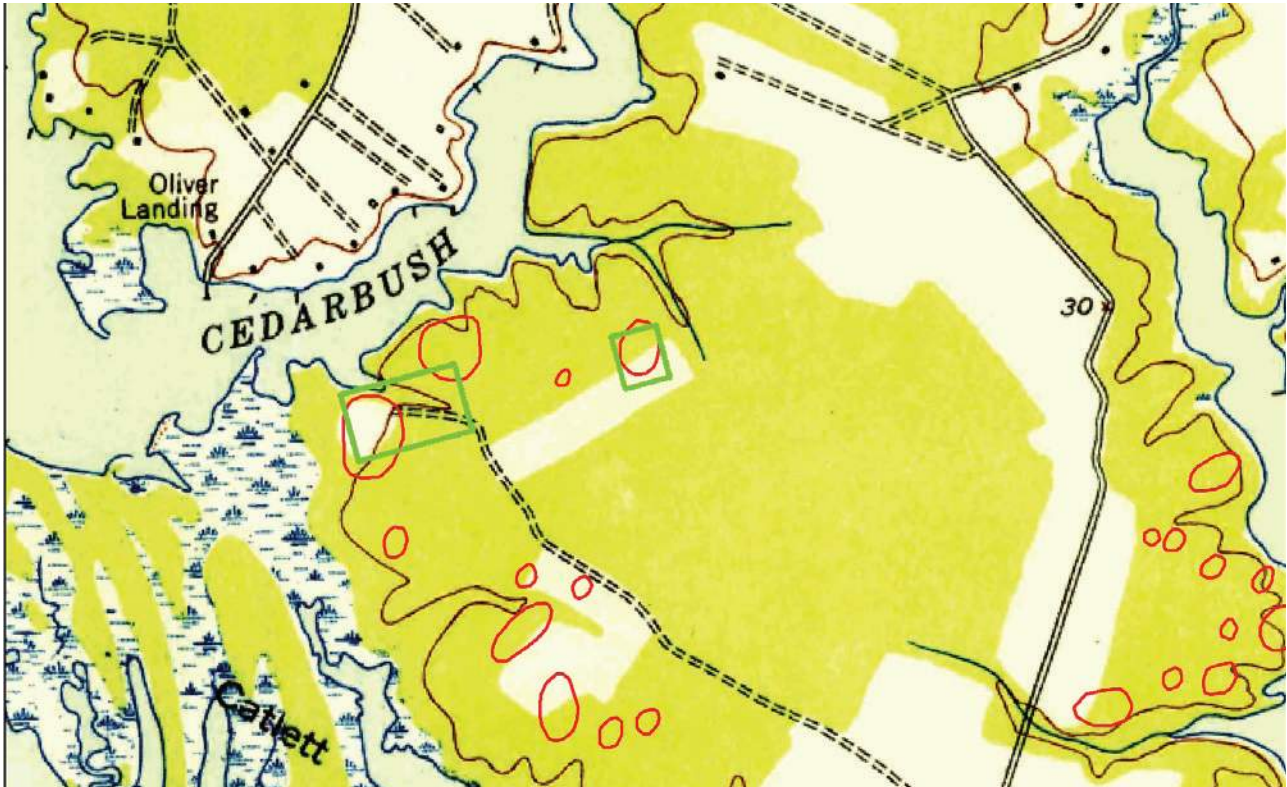
- LEGEND
- 1. Walk-In Campsite
 - 2. Walk-In Campsite Parking
 - 3. Back-In RV Site
 - 4. Pull Through RV Site
 - 5. Bathhouse
 - 6. Host Site w/ Drainfield Connection
 - 7. 100' x 200' Drainfield
 - 8. RV Dump Station
 - 9. Yurts





Key Plan







- LEGEND
- 1. Boat Launch/Shoreline
 - 2. Pier
 - 3. Boat Drop Off
 - 4. Turn Around
 - 5. Vault Restroom
 - 6. Gravel Parking
 - 7. Car Access Road
 - 8. Hiking Path

INTERPRETIVE PLAZA | Schematic Design Plan

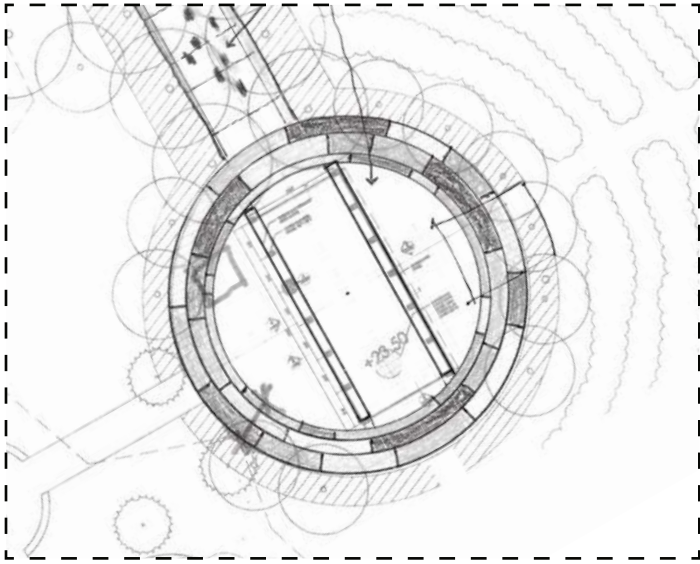
- 1. Picnic shelters (2) with shared restroom
- 2. Multi-purpose Open-Air Education Pavilion
- 3. Outdoor Classroom (Grass Slope)
- 4. Restroom
- 5. Accessible Entry Plaza: pervious concrete pavers
- 6. Crushed oyster shell path
- 7. Asphalt Parking Lot
- 8. Lower Terrace Algonquian Subsistence Plot Rotation
- 9. Upland Deciduous Forest
- 10. Visitor Access Road
- 11. Existing Cemetery
- 12. ADA path surrounding outdoor classroom
- 13. Plaza benches



Key Plan

INTERPRETIVE PLAZA | Design Development Plan

- 1. Picnic shelters (2) with shared restroom
- 2. Multi-purpose Open-Air Education Pavilion
- 3. Overlook (Orientation Point)
- 4. Restroom
- 5. Accessible Entry Plaza
- 6. Vehicular Drop-off
- 7. Asphalt Parking Lot
- 8. Three Sisters Demonstration Garden
- 9. Upland Deciduous Forest
- 10. Visitor Access Road
- 11. Existing Cemetery
- 12. ADA path
- 13. Allee and Promenade to Educational Pavilion
- 14. Lawn Area
- 15. Picnic Tables and Grills
- 16. Bioretention
- 17. Outdoor Classroom
- 18. Concentric Circle Posts



Paving Enlargement



Key Plan



INTERPRETIVE PENINSULA | Design Development Overall Plan

- 1. Picnic shelters (2)
- 2. Multi-purpose Open-Air Education Pavilion
- 3. Shared Restroom
- 4. Mown Paths
- 5. Existing Farmhouse: Colonial Period Agriculture
- 6. Boat Slip Entrance Path
- 7. Three Sisters Demonstration Garden
- 8. Overlook/Orientation Point
- 9. Boardwalk Overlook
- 10. Outdoor Classroom: Land Management
- 11. ADA Accessible Paths
- 12. Visitor Parking
- 13. Overflow or Staff Parking
- 14. Existing Boat Slips
- 15. Timberneck Creek
- 16. Catlett Islands
- 17. Existing Cemetery
- 18. Seating Area under Existing Red Cedars



Key Plan



Aerial view looking down peninsula



Picnic shelter and overflow lawn view



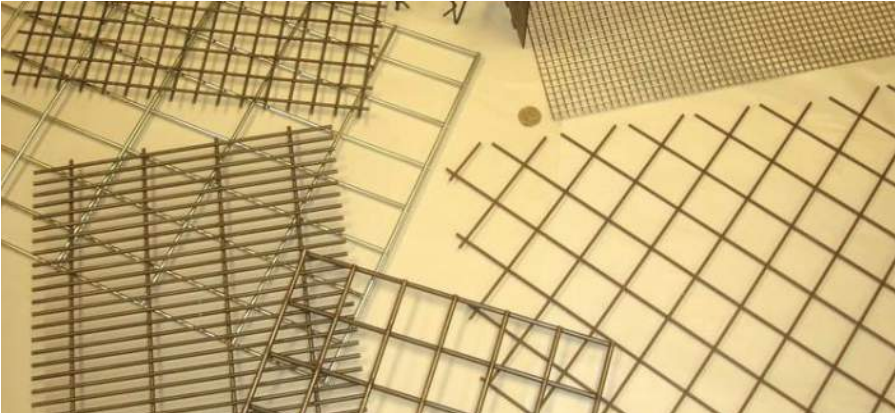
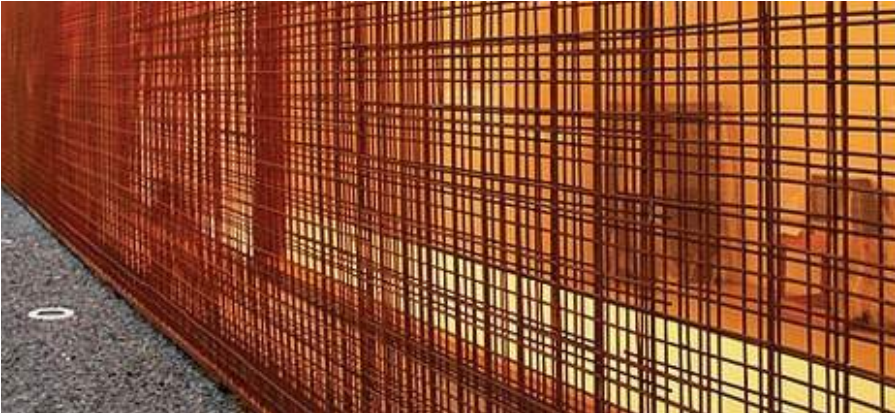
View from parking and entry of restroom



Picnic Shelter view, layered wire screens provide privacy from entry plaza & direct views out to landscape while maintaining air flow



Restroom view





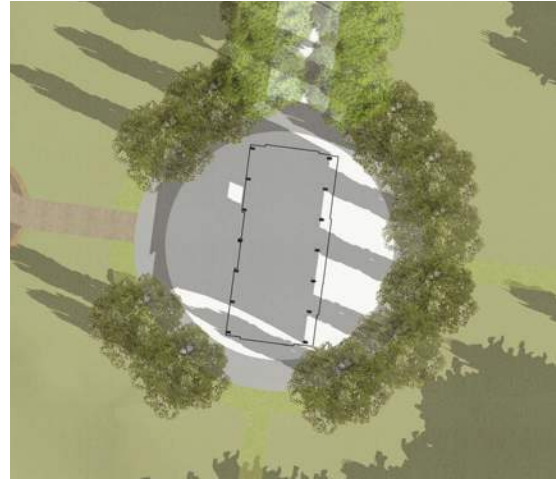
View from entry plaza towards open air education pavilion



View from overlook to open facade

09:00 AM

Spring Equinox



Summer Solstice



Winter Solstice



Fall Equinox

11:00 AM

Spring Equinox



Summer Solstice



Winter Solstice



Fall Equinox

01:00 PM

Spring Equinox



Summer Solstice



Winter Solstice

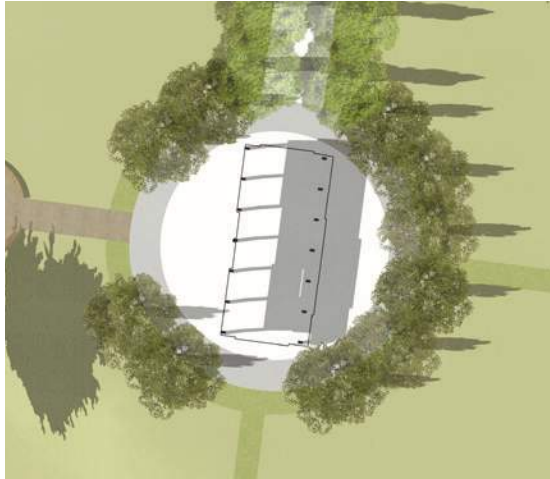
Fall Equinox

03:00 PM

Spring Equinox



Summer Solstice



Winter Solstice

Fall Equinox



The unique framing of the Open-Air Education Pavilion alludes to two saplings bent to create a structural frame, the method of construction used by Virginia Algonquians for many of their structures. The asymmetrical and peeling facade allows for air to flow through the pavilion.



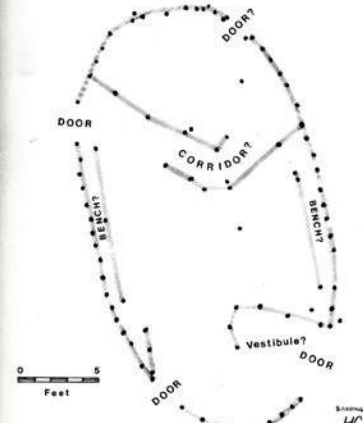
Reconstruction of a longhouse, showing sapling framing



Reconstruction of a longhouse, showing ovoid form produced by the bent saplings and woven mat cladding



Initial sketch section study



Post mould pattern of a longhouse at Paspahugh

INTERPRETIVE THEMES

Overarching Theme: The Algonquian Landscape of Tsenacommacah

Sub-themes:

1. The Algonquian Landscape

- Site Orientation
- Contextualizing the Powhatan Federation Temporally/Physically
- Map of Virginia
- Conjunction diagram

2. History and Community

- 17,000 years of Native history in the Region
- Patowomeke origin story – giants, deer, a great hare – how this place came into being
- Changing Settlement and Subsistence Patterns

3. Managing a Dynamic Landscape

- Native transformation of landscape (clearing, burning, harvesting)
- Harvesting the Chesapeake in a sustainable way
- Climate history and changes to the Chesapeake estuary

4. Placemaking and Mobility

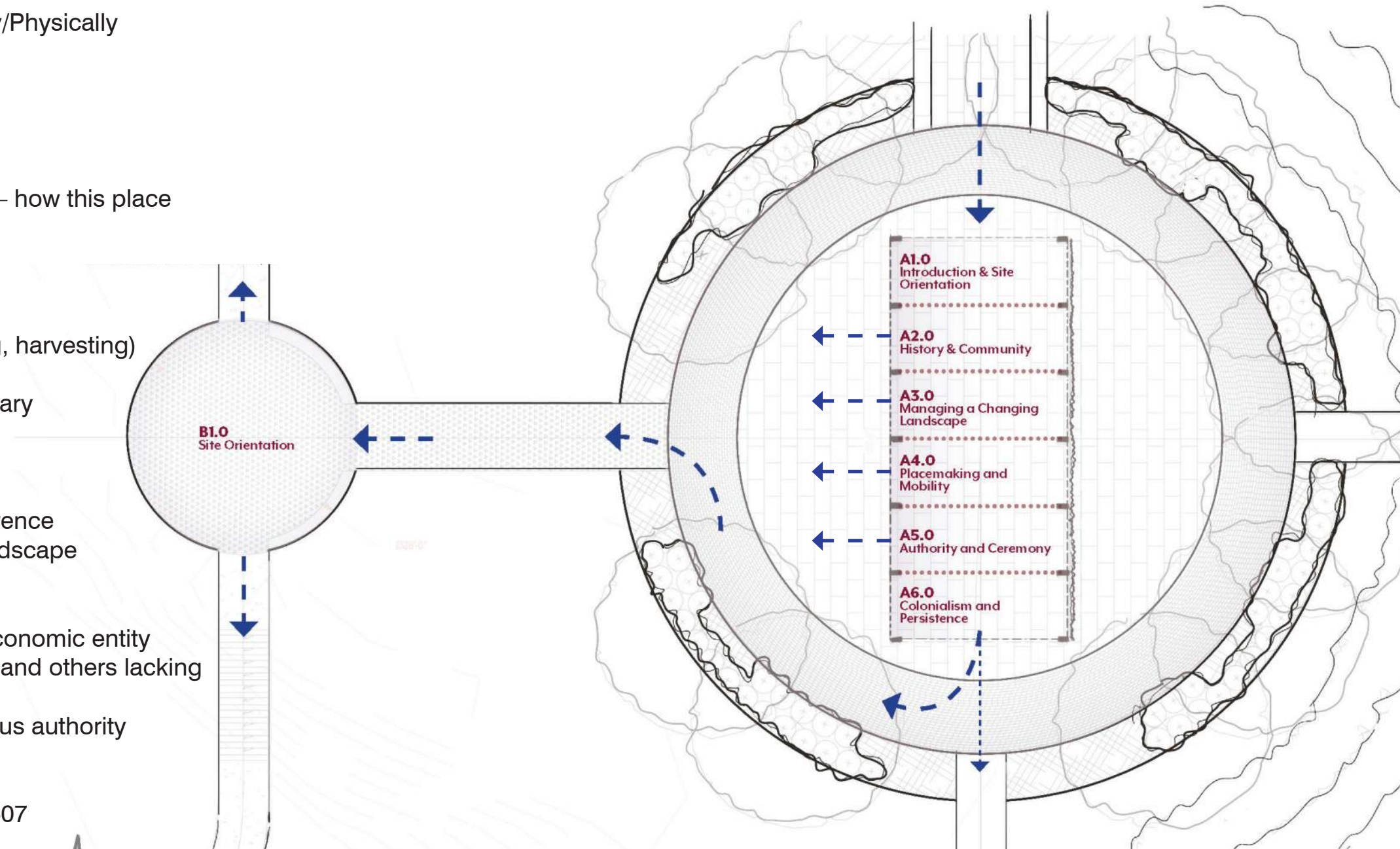
- Creation of riverine towns circa AD 1200
- Algonquian place names and a riverine frame of reference
- Annual cycle and seasonal movement across the landscape

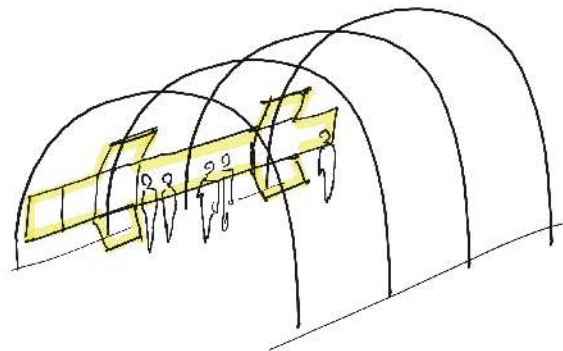
5. Authority and Ceremony

- Powhatan chiefdom as a political, ceremonial, and economic entity
- Political landscape of powerful town with Weroances and others lacking
- Werowocomoco as a central seat of power
- Werowocomoco as a place of political power / religious authority

6. Colonialism and Persistence

- Early European arrivals in the Chesapeake, 1571 - 1607
- Three Powhatan/Anglo Wars
- History of Native land loss in Virginia – separation from Native places
- Virginia Indian communities and reservations today
- Reassertion of Native sovereignty
- Native sovereignty in the modern era



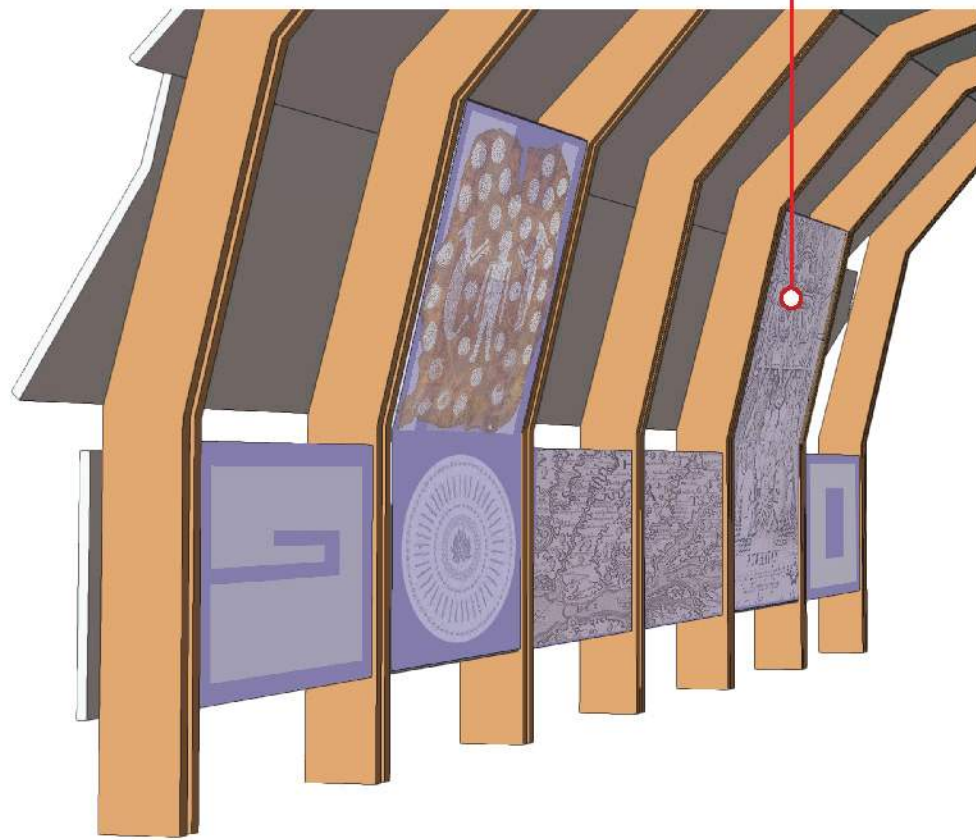
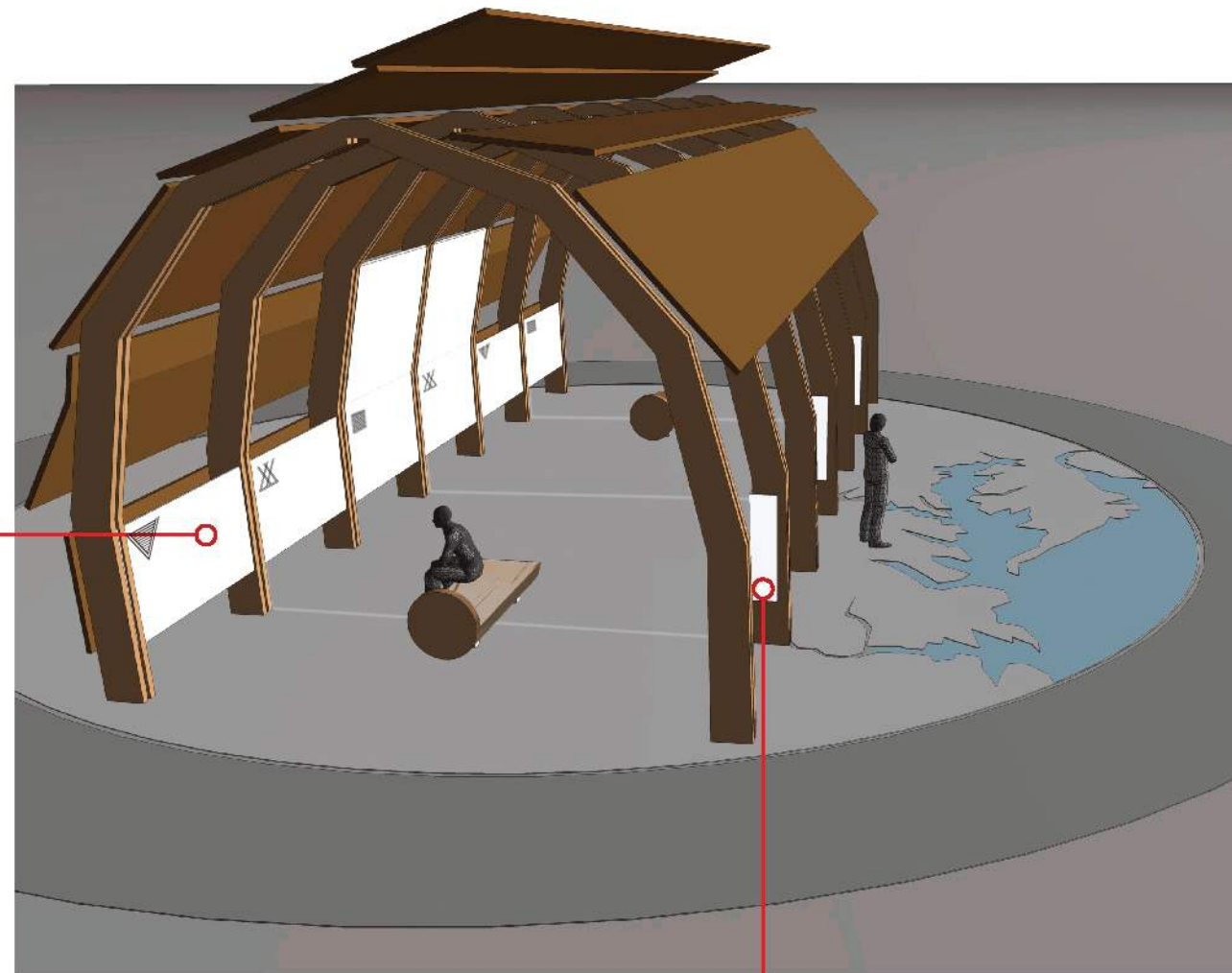


The Interpretive Center will support the most dense amount of content. This is where the visitor's orientation to the site and an understanding of its cultural and historic significance will be primarily shared.

Primary Interpretive Graphics

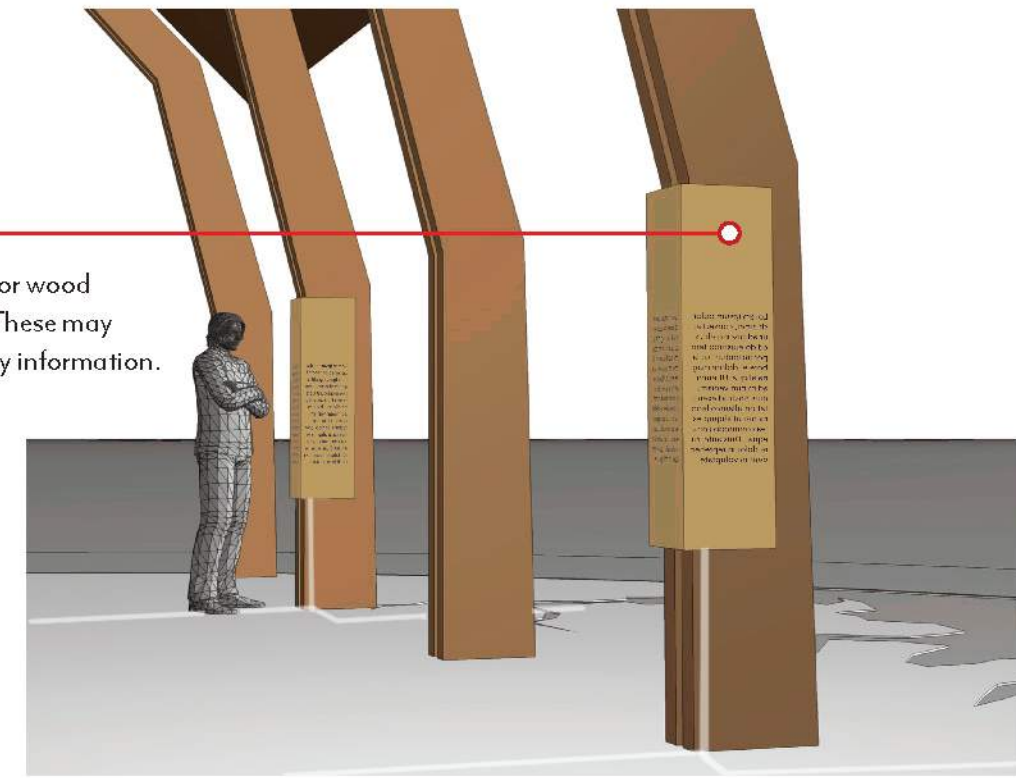
Content is divided into six interpretive themes:

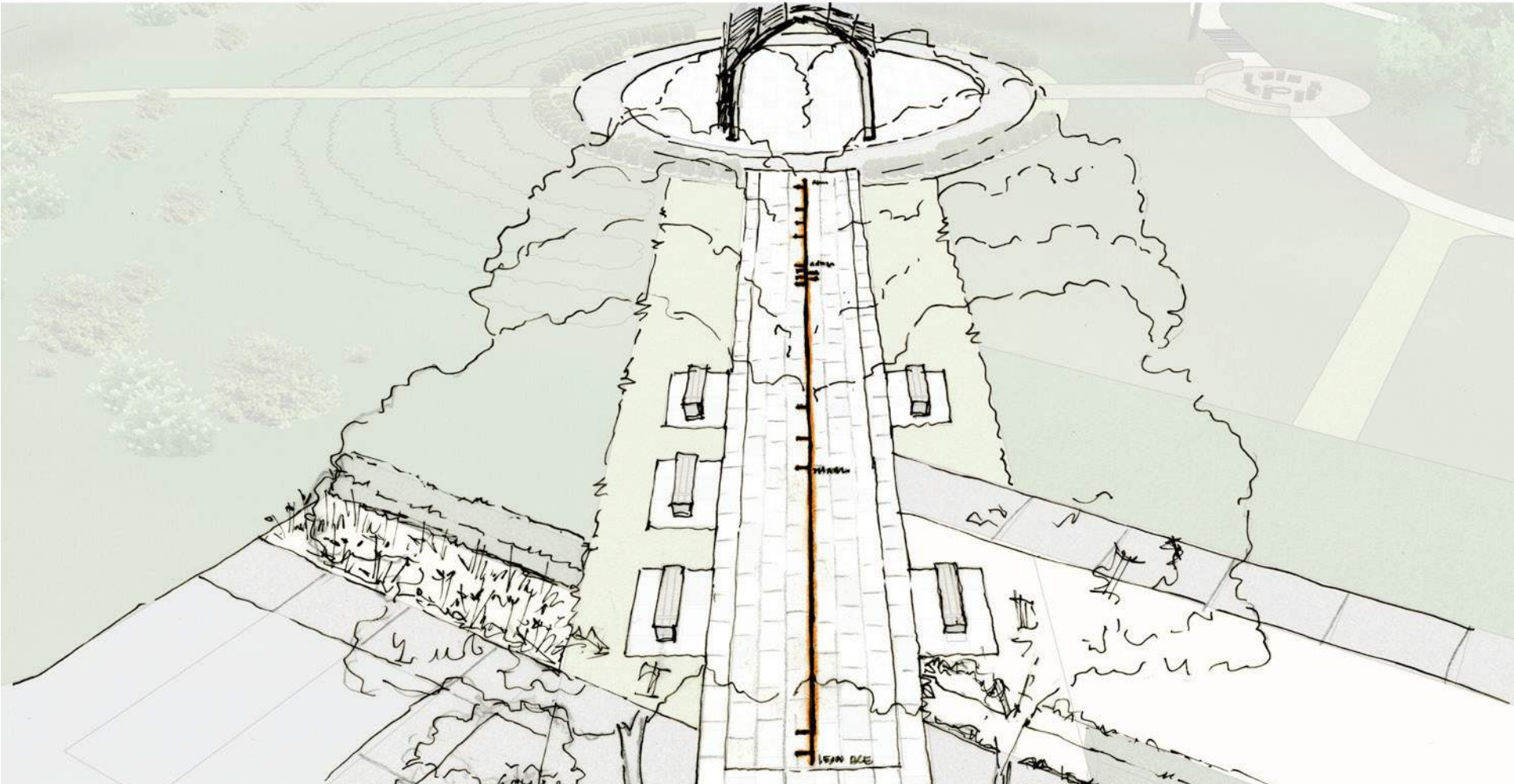
- A) Site orientation
- B) History and Community
- C) Managing a changing landscape
- D) Placemaking and Mobility
- E) Authority and ceremony
- F) Colonialism and persistence



Graphic Cuffs

Three sided graphic made of copper or wood fit over existing structural elements. These may serve to support primary or secondary information.



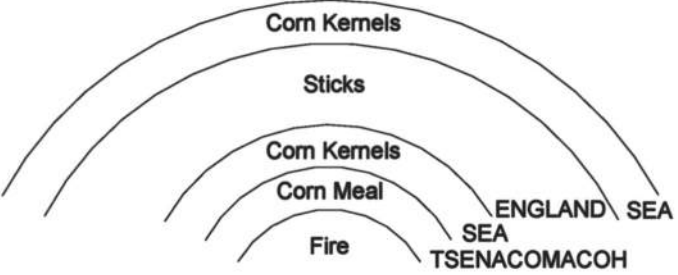
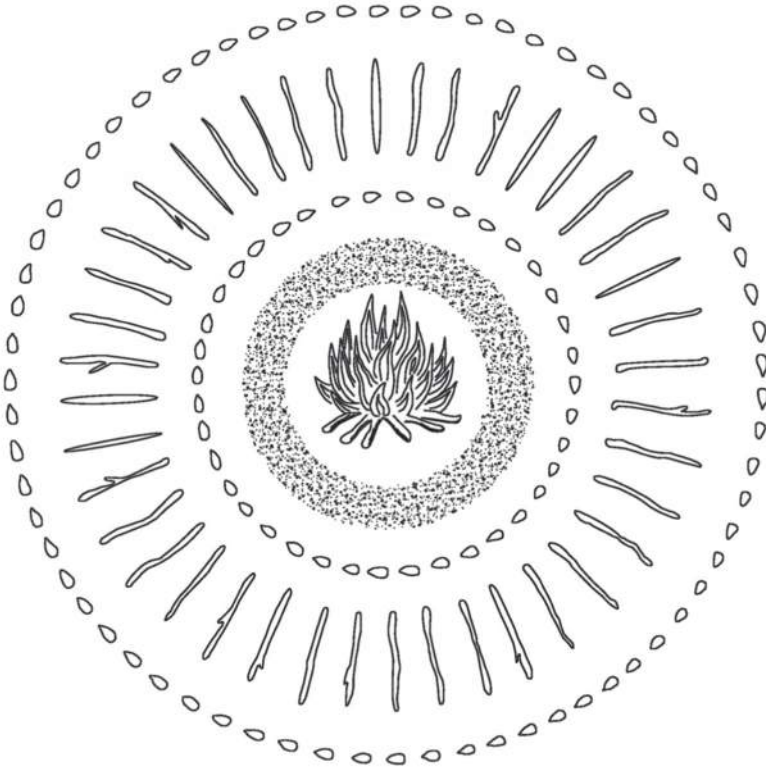


INTERPRETIVE | Pavilion Ground Map

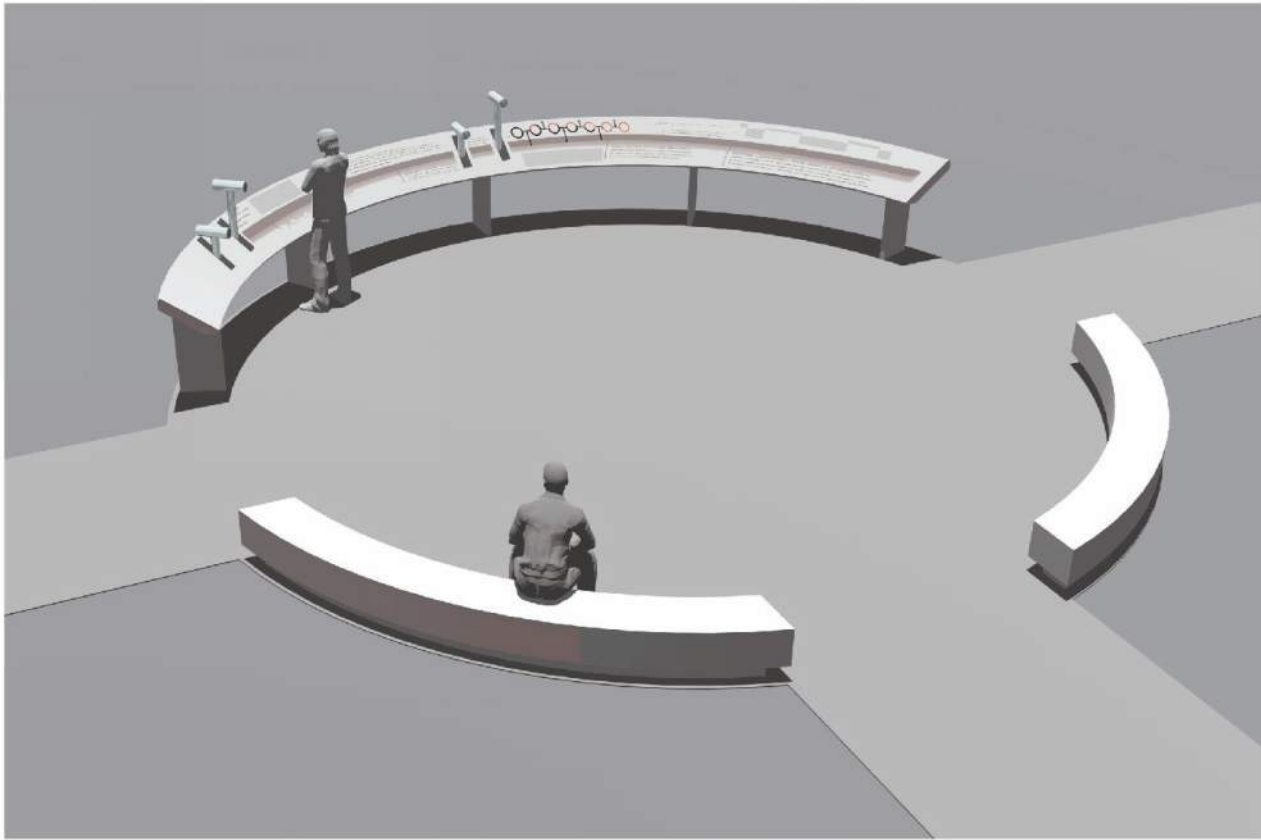
As a way for visitors to gain an understanding of the site's connection to the broader region as well as an orientation to their place in it, a large map can occupy the ground with associated graphic content etched into it.



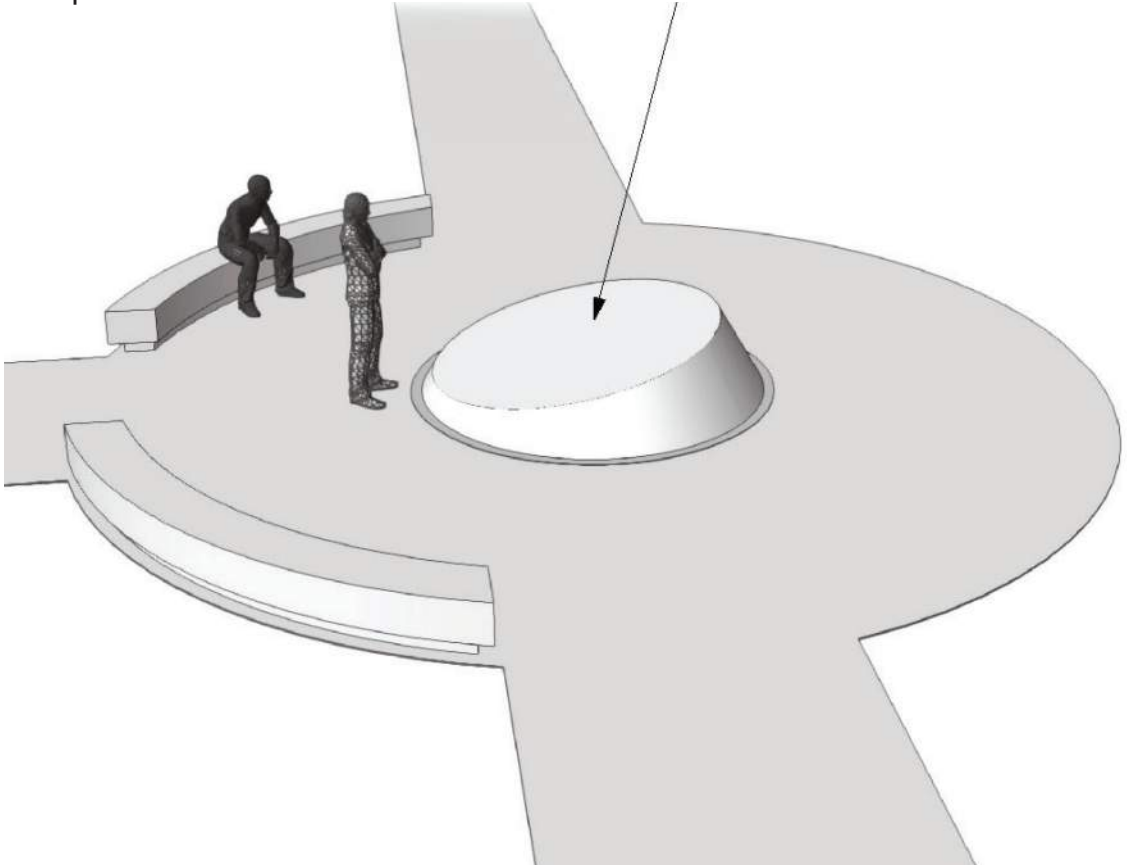


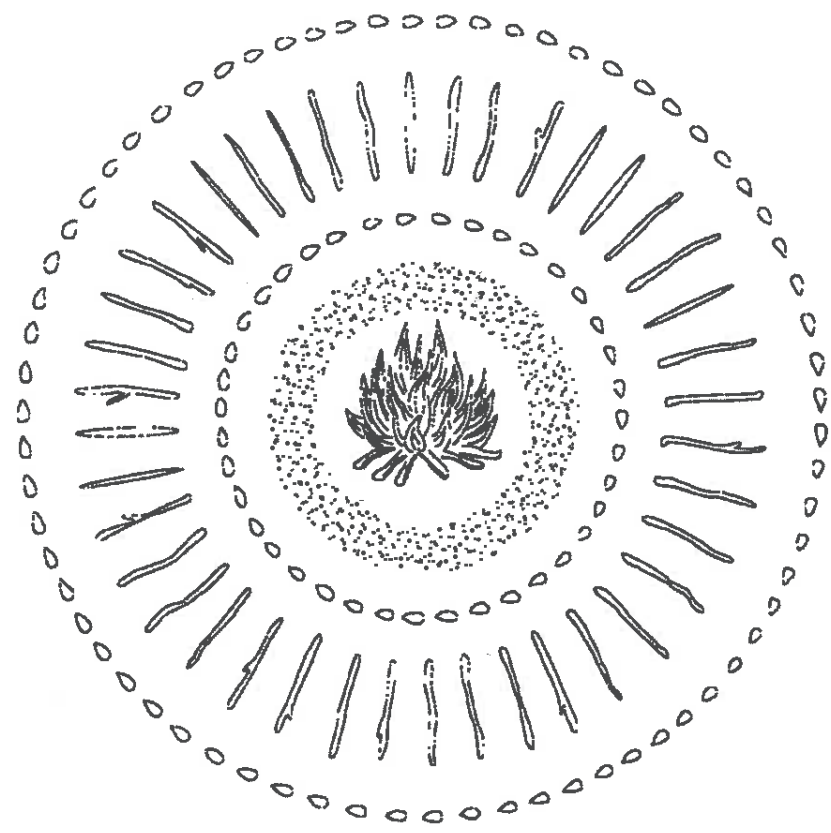


Concept 1

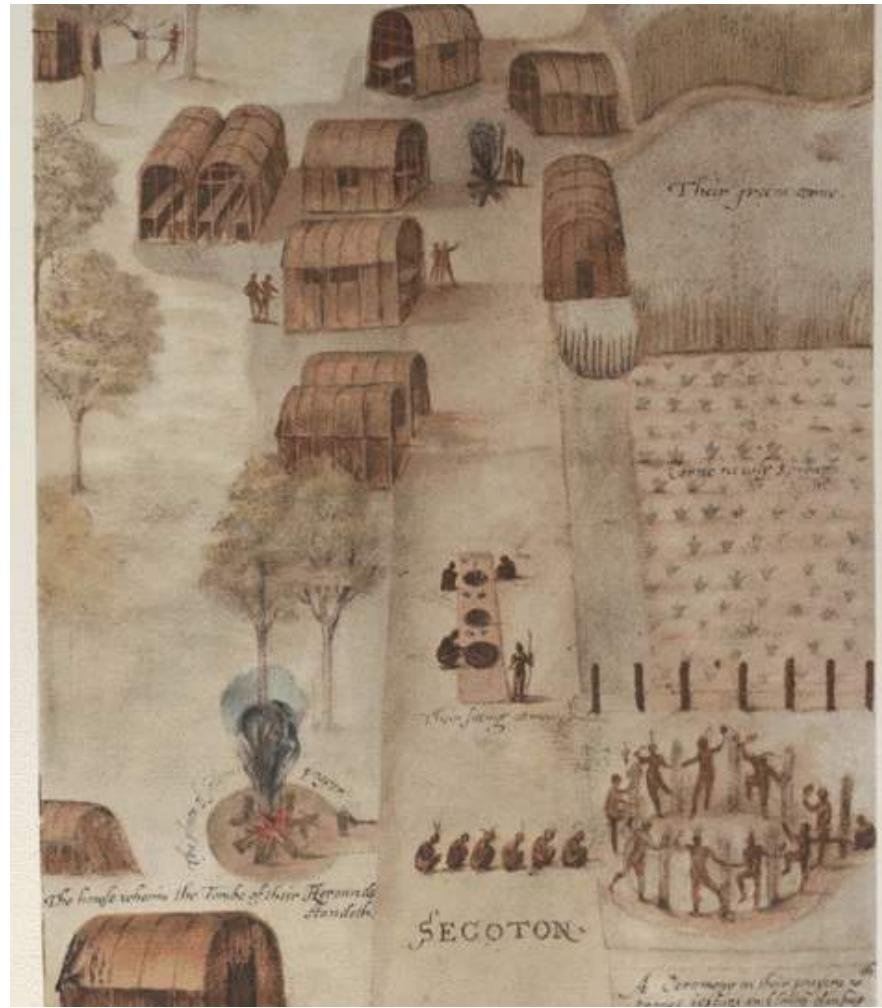


Concept 2

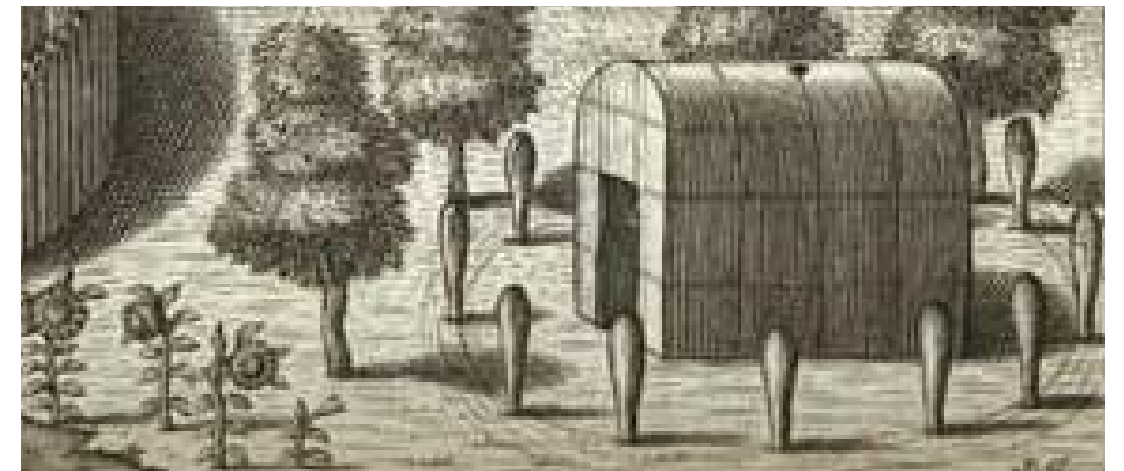
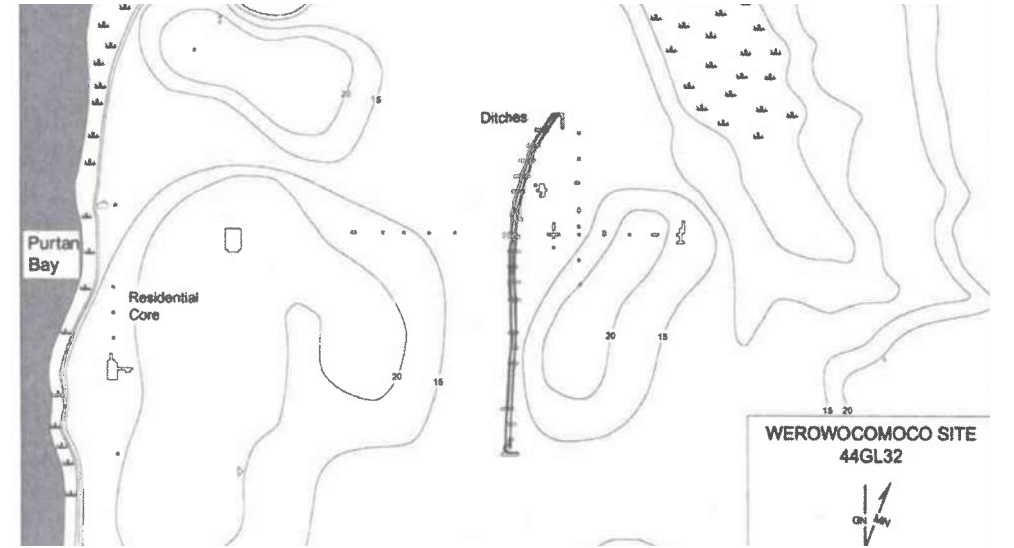




Powhatan "conjunction" circle



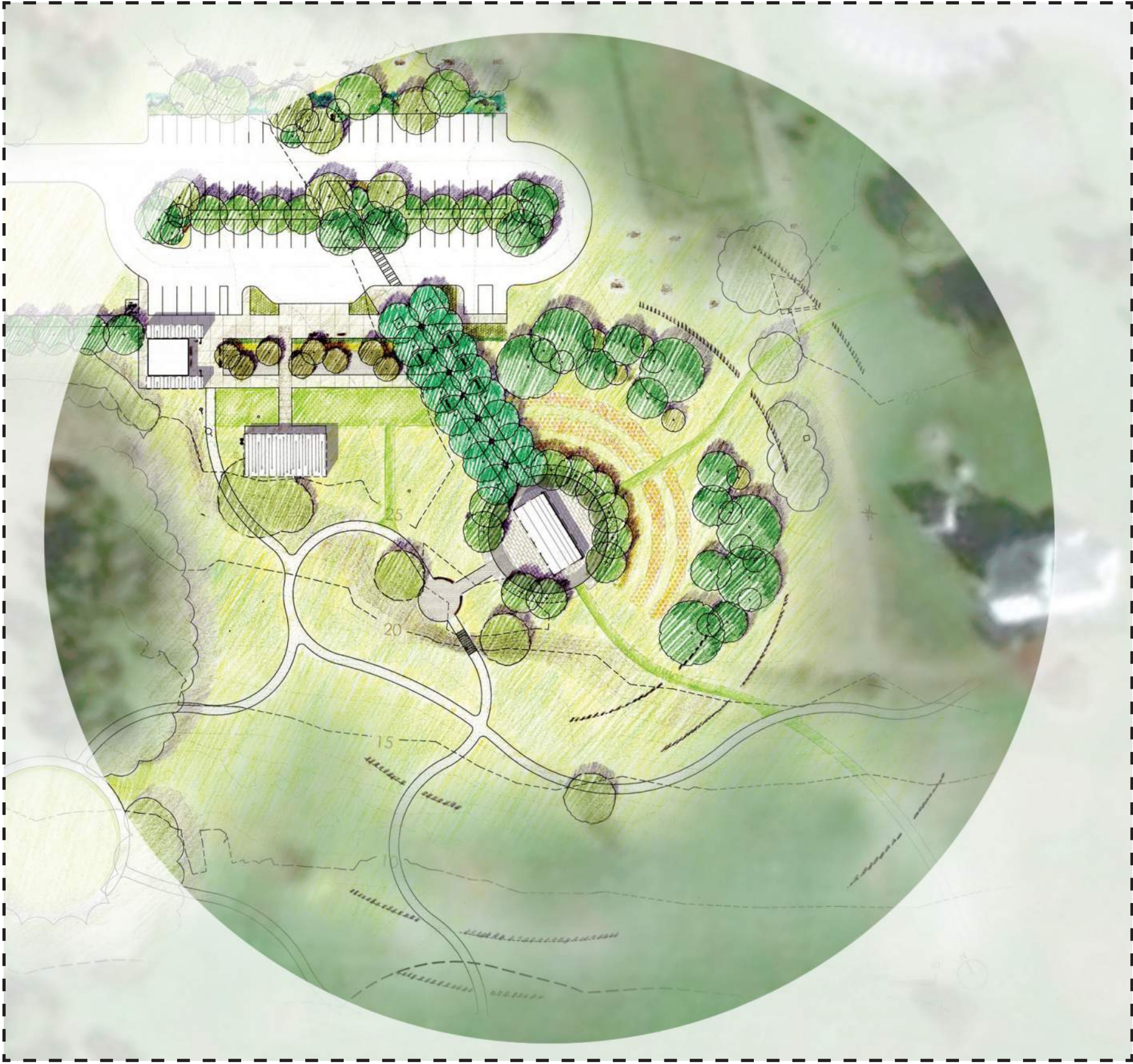
Watercolors by John White



Quioccosans, one of many centers of influence, were located outside of towns, sometimes beyond town palisades or trenchlines

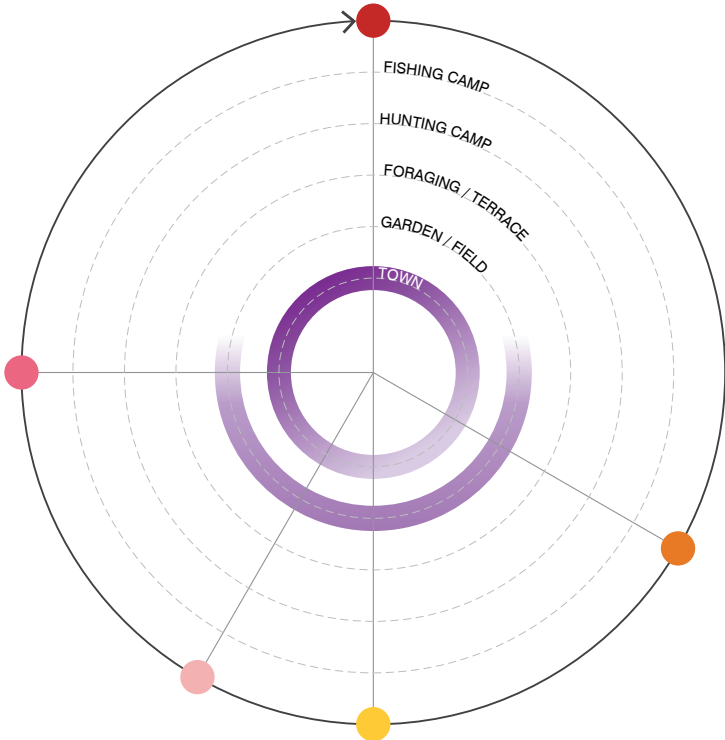


Powhatan's Mantle



Plan View

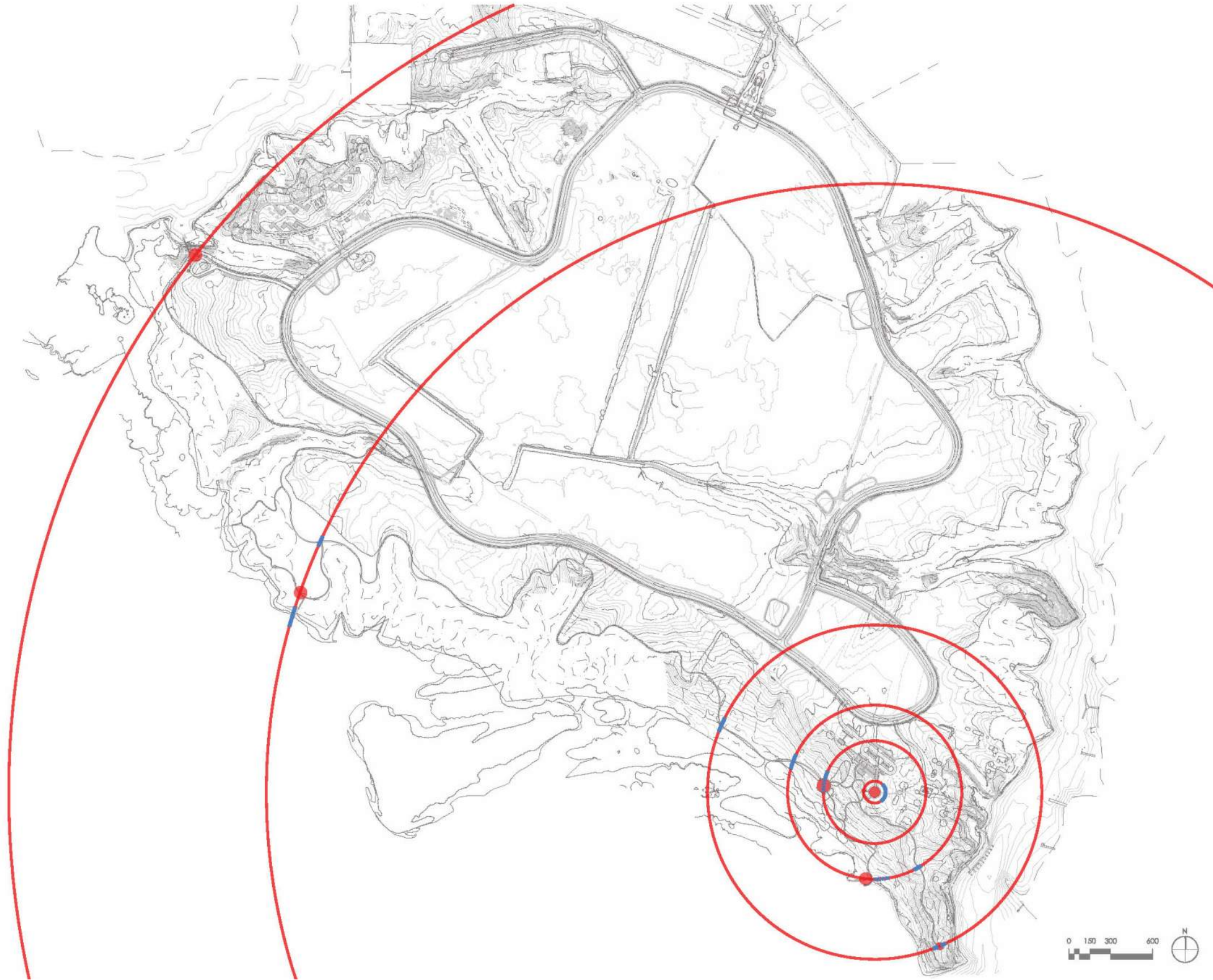


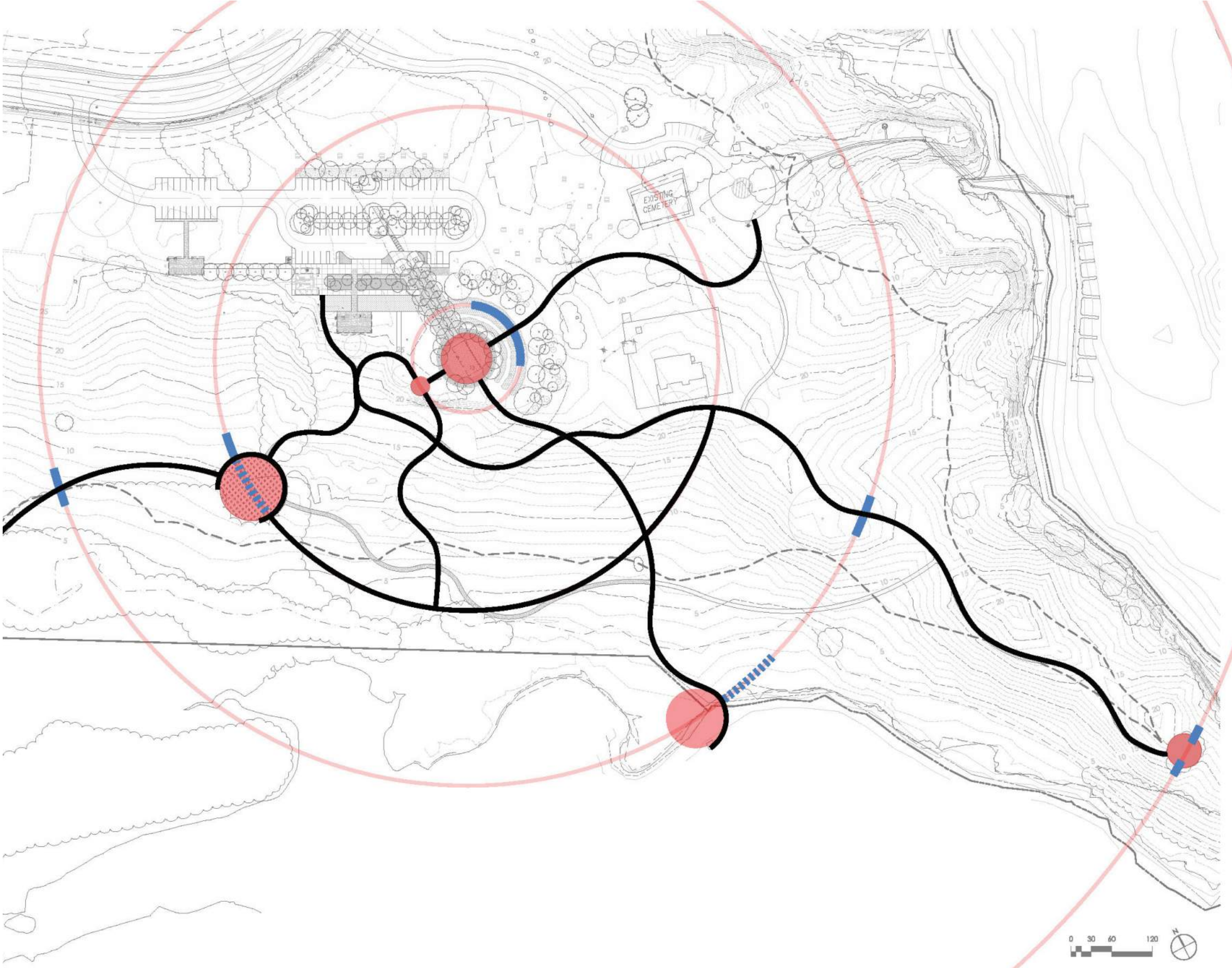


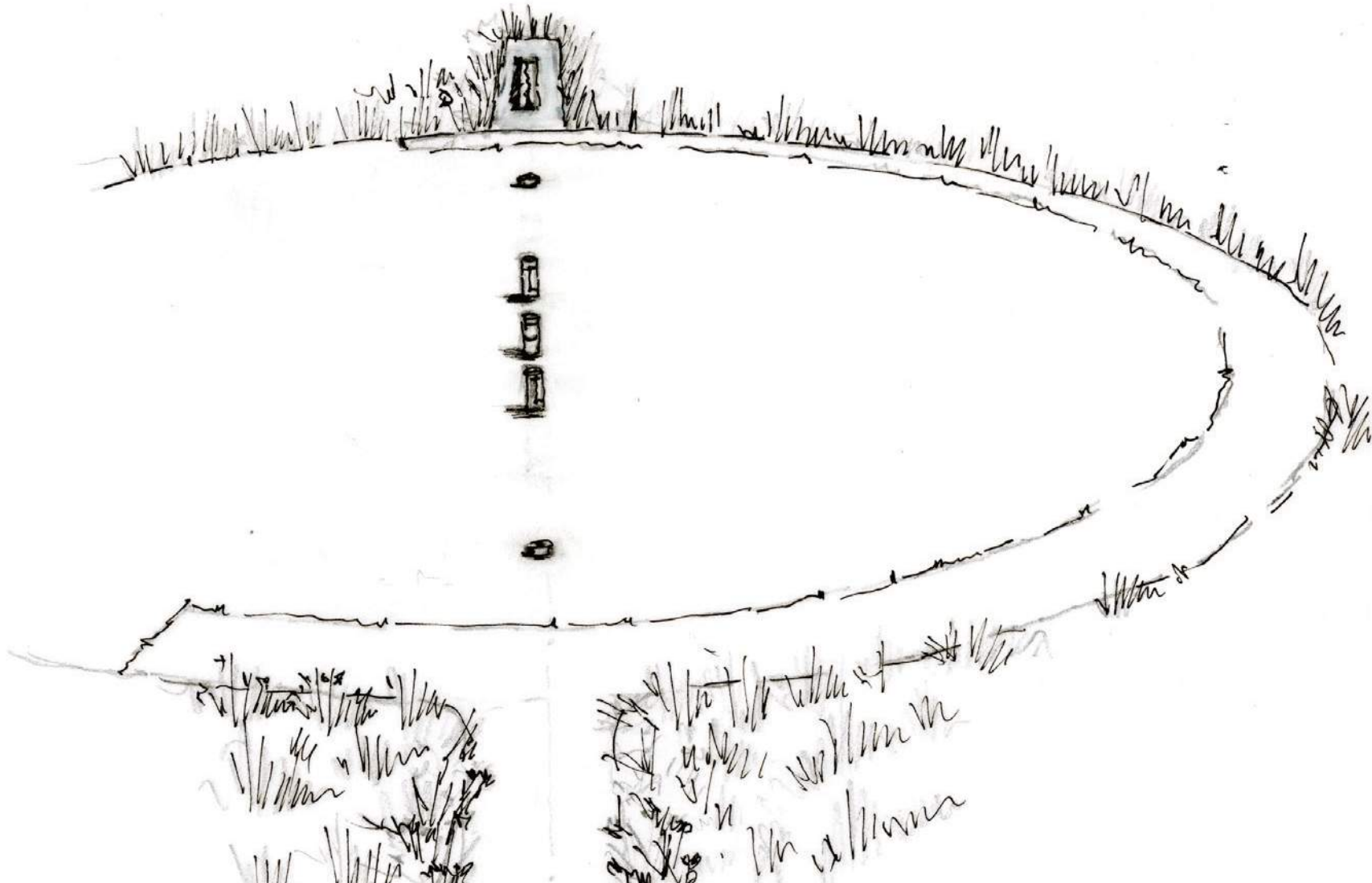
The subsistence cycle relates to the inside/outside relationship expressed by a circle

ALGONQUIAN TERMS:

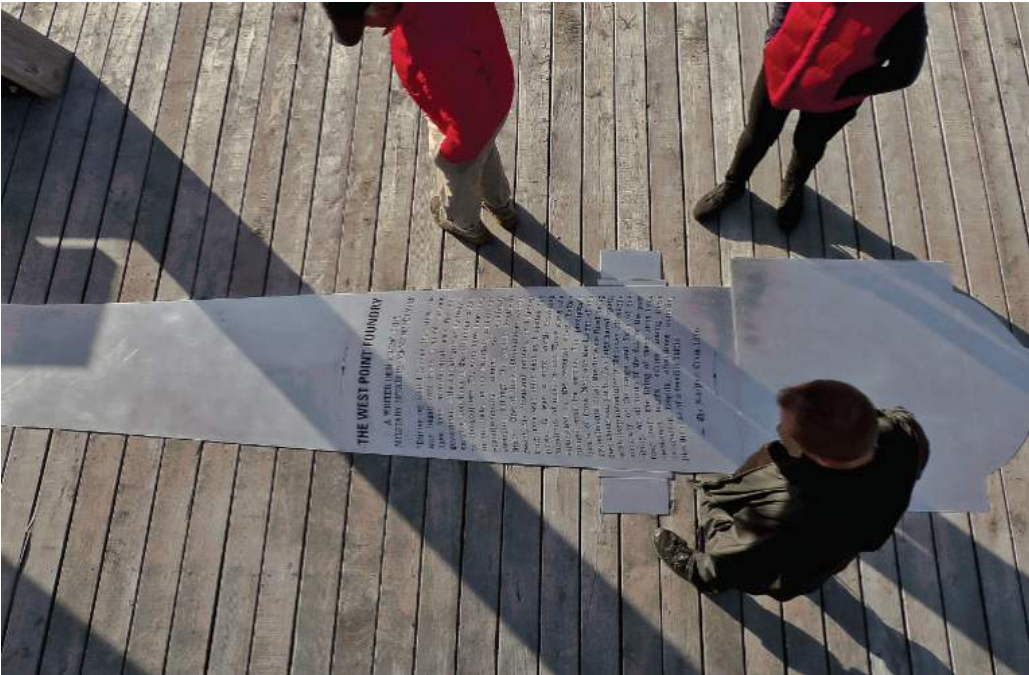
- | | |
|--------------|------------------------|
| Oysters | Cauwaih |
| Earth | Aspamu |
| Virginia | Tsenacomah |
| Seasons | [NAMES OF FIVE] |
| Sky | Arrokoth |
| River | Yocaanta |
| Village | Kaasun |
| Hill | Romuttun |
| Welcome | Wingapo |
| Beaver | Pohkevwh |
| Bear | Amonsoquath |
| Bird | Tshehip |
| Clouds | Mammaum |
| Deer | Uttapaantam |
| Fish | Nammais |
| Grass | Mehteqweins |
| Gust of wind | Tohtummocunnun |
| Island | Memnunnahqus |



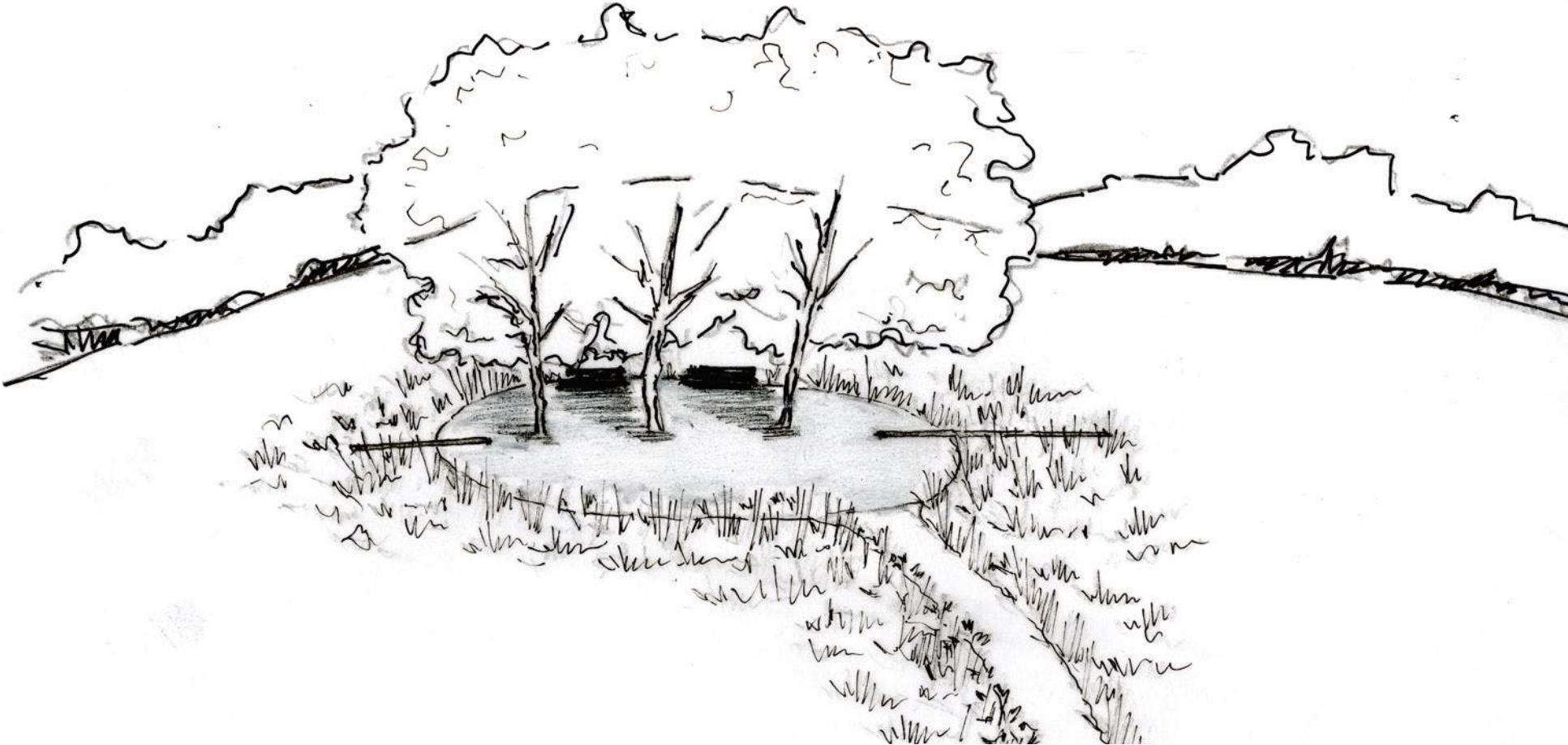




INTERPRETIVE | Concept 2 Landscape Interventions







INTERPRETIVE THEMES

Overarching Theme: The Algonquian Landscape of Tsenacommacah

Sub-themes:

1. The Algonquian Landscape

- Site Orientation
- Contextualizing the Powhatan Federation Temporally/Physically
- Map of Virginia
- Conjunction diagram

2. History and Community

- 17,000 years of Native history in the Region
- Patawomeke origin story – giants, deer, a great hare – how this place came into being
- Changing Settlement and Subsistence Patterns

3. Managing a Dynamic Landscape

- Native transformation of landscape (clearing, burning, harvesting)
- Harvesting the Chesapeake in a sustainable way
- Climate history and changes to the Chesapeake estuary

4. Placemaking and Mobility

- Creation of riverine towns circa AD 1200
- Algonquian place names and a riverine frame of reference
- Annual cycle and seasonal movement across the landscape

5. Authority and Ceremony

- Powhatan chiefdom as a political, ceremonial, and economic entity
- Political landscape of powerful town with Weroances and others lacking
- Werowocomoco as a central seat of power
- Werowocomoco as a place of political power / religious authority

6. Colonialism and Persistence

- Early European arrivals in the Chesapeake, 1571 - 1607
- Three Powhatan/Anglo Wars
- History of Native land loss in Virginia – separation from Native places
- Virginia Indian communities and reservations today
- Reassertion of Native sovereignty
- Native sovereignty in the modern era