

WELCOME TO WIDewater STATE PARK.

To make your visit safe and more pleasant, we ask that you observe the following:

Take only pictures, leave only footprints. Park in designated areas only. Please note there is a parking fee charged year-round at all Virginia State Parks. Self-pay parking information is available at the contact station.

PRESERVE - Help preserve your park. Please don't cut or mar any plants or trees. Collecting animal or plant life is allowed only for scientific purposes by permit from the Richmond headquarters. Don't feed any wild animals.

ALCOHOL - State law permits alcohol use only in private areas (inside your cabin or camping unit) or in areas designated on permits issued by the Virginia Department of Alcoholic Beverage Control.

PETS - Pets are permitted in enclosed areas or on a leash no longer than 6 feet. Please clean up after your pet. Pets must be attended at all times. Pets are not allowed inside facilities; service dogs are not considered pets.

DRONES AND OTHER AIRCRAFT - Drones, other unmanned aerial vehicles, including remote control aircraft, and aircraft in general may not be flown in state parks pursuant to 4VAC5-30-400.

LITTER - Please help us keep the park clean by placing litter and recyclables in the proper receptacles and recycle centers or carrying out your trash. The releasing of balloons is not allowed. Decorative balloons must be deflated and disposed of as trash.

FIRE - Help prevent wildfires. Fires must be confined to grills, camp stoves or designated fire rings. Fires must be attended at all times and extinguished when left. Firewood is generally available for purchase at the park. Campers and guests may collect only downed and dead firewood. We enforce all seasonal and emergency bans on open fires. Personal grills are not allowed except for small, portable gas grills between Feb. 15 and April 30.

POLLUTION - Help reduce pollution. Dump stations, laundry sinks and slop sinks, where available, are for the disposal of wastewater. No boat, RV or car washing. Portable showers that do not drain to wastewater storage tanks are prohibited by state law. Collected wastewater must be disposed of properly.

FISHING - A valid fishing license is required. A Virginia freshwater license is required for fishing Aquia Creek.

SWIMMING - There are no designated swimming areas in the park.

GUESTS - Your guests are our guests. For everyone's safety and security, please register all visitors with the park office. Visitors will not be admitted to camping areas unless so identified. Visitors are permitted only between 8 a.m. and dusk.

QUIET HOURS - Quiet hours are between 10 p.m. and 6 a.m. The use of generators is prohibited at all times.

CHECK-IN AND CHECK-OUT POLICY

Camping: Check-in 4 p.m. Check-out 1 p.m.

In many cases, campers may be accommodated prior to the official check-in. Please remember that only those 18 or older may register. The registrant is responsible for all occupants of the campsite. Feel free to arrive early and enjoy park amenities prior to check-in.

Overnight guests are encouraged to be familiar with the early departure policy since it impacts any refund due. The policy and frequently asked questions are here: www.dcr.virginia.gov/state-parks/faq.

CAMPING - Paddle-in camping is allowed only in the designated campground and only after following the proper check-in procedure. Campsite occupancy is a maximum of six people or the number of people in a single household. Two camping units are allowed per campsite. All camping units and equipment must be placed within the perimeter of the designated campsite without infringing on adjoining campsites or vegetation.

The maximum overnight stay per park is 14 days in any 30-day period.

PARKING - All vehicles must be parked in designated areas. Lock valuables in your trunk and keep your vehicle locked when unattended.

GROUP EVENTS - A Special Use Permit is required for all group events that involve amplified sound, catering, equipment rentals and vendor deliveries.

PARK ACCESSIBILITY - We strive to make each park as barrier-free as possible. Universally accessible facilities are available throughout Virginia State Parks. Please check the park's website for details.

EMERGENCY - For fire or medical emergencies, dial 911. For law enforcement or critical maintenance issues, call 800-933-7275 and select the appropriate option.

INFORMATION - For more information on Virginia State Parks or to make a cabin or campsite reservation, call 800-933-PARK or visit www.virginiastateparks.gov.

TRAIL INFORMATION

DIFFICULTY SCALE

EASY ● - From .5 to 1 mile; grades are short, typically fewer than 100 feet and less than 10 percent of the trail length; easily accomplished by all users, including the elderly and those with physical or mental disabilities, with little risk of injury or fatigue.

MODERATE ■ - From 1 to 5 miles; steepness and grade lengths vary; at least 60 percent of the length is fairly flat; healthy people can accomplish the trail with little risk of injury or fatigue.

DIFFICULT ◆ - Trail length is greater than 5 miles; more than 70 percent of the trail is on a grade; experienced hikers only or groups of three to five people recommended; there is a risk of overexertion or injury to those not conditioned.

Virginia State Parks

Widewater State Park

TRAIL GUIDE

VIRGINIA STATE PARKS ARE A TONIC FOR THE MIND, BODY AND SPIRIT.

Museums, visitor centers and nearby historic sites make state parks cultural treasures.

The recreational opportunities in state parks are endless and easy to see – from swimming and boating to horseshoes and hiking, there's always something to do in a Virginia State Park.

101 Widewater State Park Road
Stafford, VA 22554
540-288-1400
widewater@dcr.virginia.gov



WWW.VIRGINIASTATEPARKS.GOV
800-933-PARK

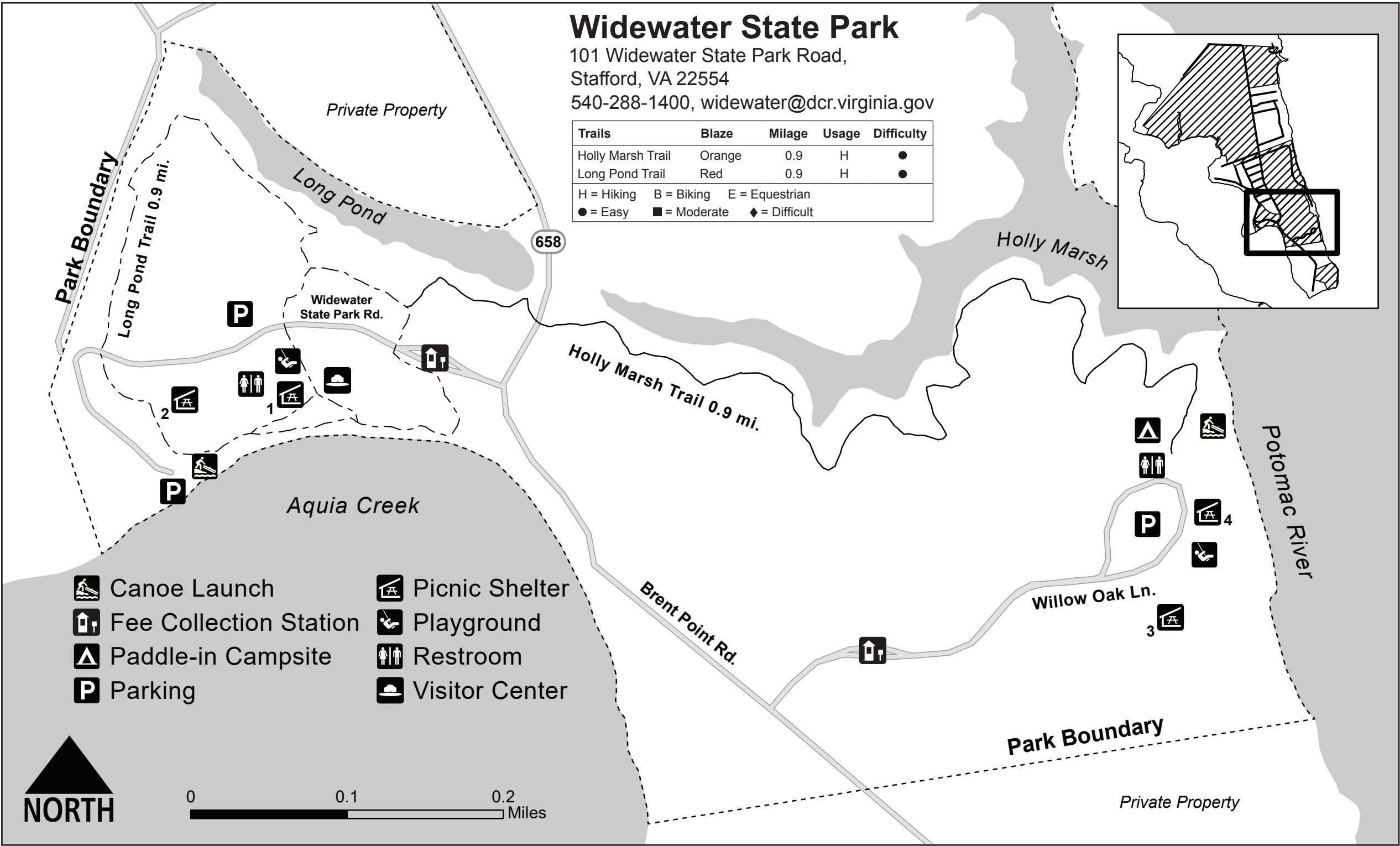
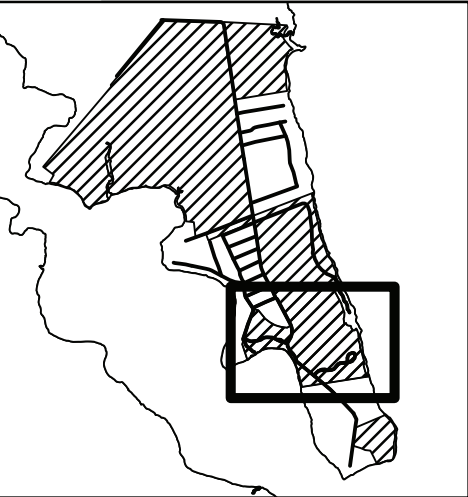
Widewater State Park

101 Widewater State Park Road,
Stafford, VA 22554

540-288-1400, widewater@dcr.virginia.gov

Trails	Blaze	Milage	Usage	Difficulty
Holly Marsh Trail	Orange	0.9	H	●
Long Pond Trail	Red	0.9	H	●

H = Hiking B = Biking E = Equestrian
 ● = Easy ■ = Moderate ◆ = Difficult



- Canoe Launch
- Picnic Shelter
- Fee Collection Station
- Playground
- Paddle-in Campsite
- Restroom
- Parking
- Visitor Center

