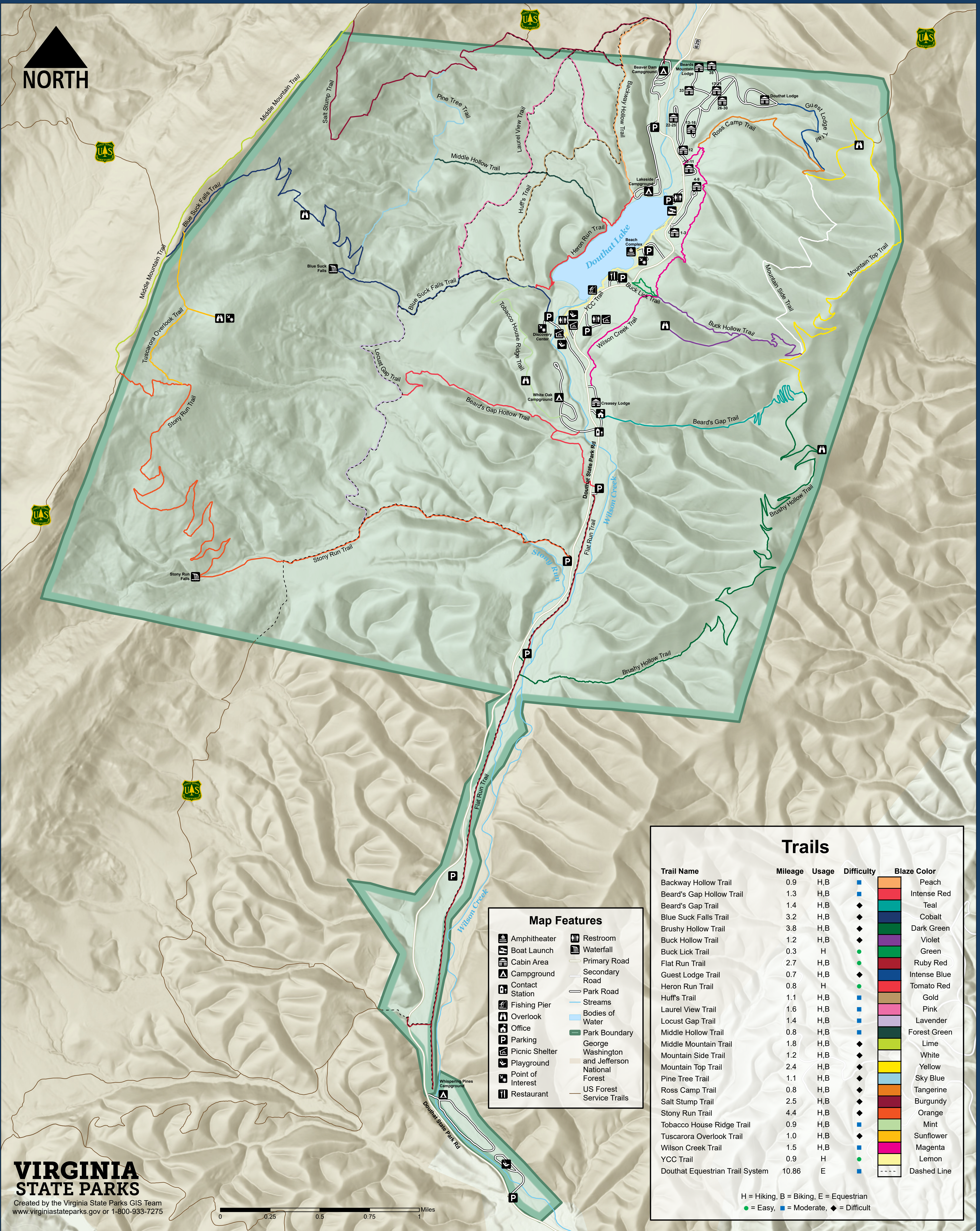


NORTH



Map Features

	Amphitheater		Restroom
	Boat Launch		Waterfall
	Cabin Area		Primary Road
	Campground		Secondary Road
	Contact Station		Park Road
	Fishing Pier		Streams
	Overlook		Bodies of Water
	Office		Park Boundary
	Parking		George Washington and Jefferson National Forest
	Picnic Shelter		US Forest Service Trails
	Playground		
	Point of Interest		
	Restaurant		

Trails

Trail Name	Mileage	Usage	Difficulty	Blaze Color
Backway Hollow Trail	0.9	H,B	■	Peach
Beard's Gap Hollow Trail	1.3	H,B	■	Intense Red
Beard's Gap Trail	1.4	H,B	◆	Teal
Blue Suck Falls Trail	3.2	H,B	◆	Cobalt
Brushy Hollow Trail	3.8	H,B	◆	Dark Green
Buck Hollow Trail	1.2	H,B	◆	Violet
Buck Lick Trail	0.3	H	●	Green
Flat Run Trail	2.7	H,B	●	Ruby Red
Guest Lodge Trail	0.7	H,B	◆	Intense Blue
Heron Run Trail	0.8	H	●	Tomato Red
Huff's Trail	1.1	H,B	■	Gold
Laurel View Trail	1.6	H,B	■	Pink
Locust Gap Trail	1.4	H,B	■	Lavender
Middle Hollow Trail	0.8	H,B	■	Forest Green
Middle Mountain Trail	1.8	H,B	◆	Lime
Mountain Side Trail	1.2	H,B	◆	White
Mountain Top Trail	2.4	H,B	◆	Yellow
Pine Tree Trail	1.1	H,B	◆	Sky Blue
Ross Camp Trail	0.8	H,B	◆	Tangerine
Salt Stump Trail	2.5	H,B	◆	Burgundy
Stony Run Trail	4.4	H,B	◆	Orange
Tobacco House Ridge Trail	0.9	H,B	■	Mint
Tuscarora Overlook Trail	1.0	H,B	◆	Sunflower
Wilson Creek Trail	1.5	H,B	■	Magenta
YCC Trail	0.9	H	●	Lemon
Douthat Equestrian Trail System	10.86	E	■	Dashed Line

H = Hiking, B = Biking, E = Equestrian
 ● = Easy, ■ = Moderate, ◆ = Difficult

